

#04
AUTUMN / WINTER
2014

ENTOURAGE
MAGAZINE



ISSN 2213-3410 | US \$39 | EU €19 | UK £18

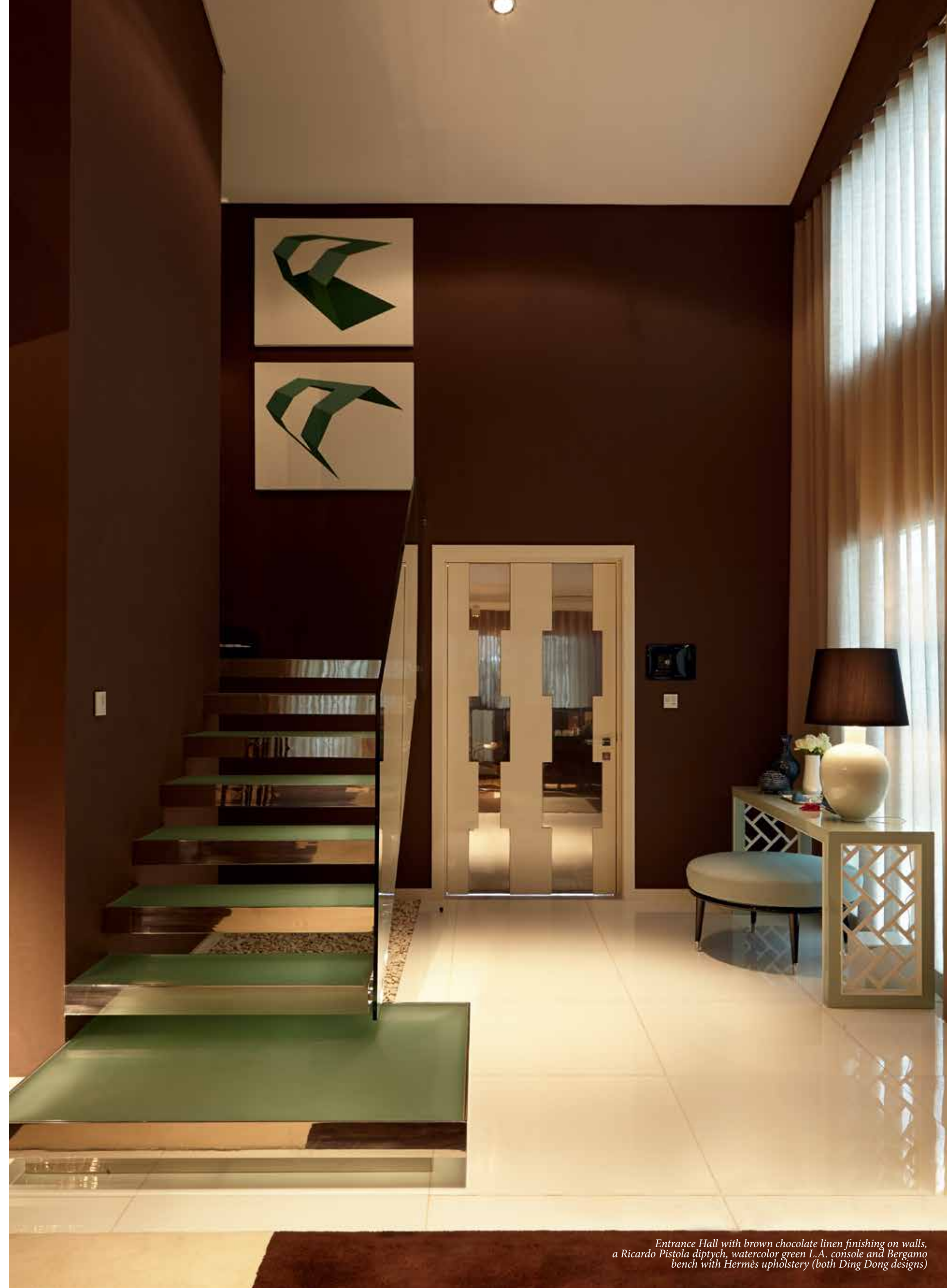


BY
ERIC KUSTER

colorful S I M P L I C I T Y
S ã O P A U L O

CASA LUANDA, A HOUSE IN LUANDA, FORMERLY SÃO PAULO AND THE CAPITAL AND LARGEST CITY OF ANGOLA IN SOUTHERN AFRICA, IS A PERFECT REFLECTION OF ON ONE HAND THE STUDIO'S DESIGN PHILOSOPHY AND ON THE OTHER HAND THE PROJECTION OF THE FAMILY'S JOYFUL AND FRESH PERSONALITY. MATERIALS AS AMERICAN WALNUT PANELING AND SILK WALLPAPERS AND STRONG COLORS AS GREEN, BROWN AND ORANGE REFER TO THE SURROUNDING LANDSCAPES OF ANGOLA. THE EARTH, THE SEA AN THE SKY

PHOTOGRAPHY: *Pedro Lobo*
STYLING: *Ding Dong*





Living room view with Biarritz sofas and polished steel emerald onyx top coffee tables (both designed by Ding Dong). On the left wall "Deep Ocean" diptych by Jorge Ramos

ENTOURAGE INTERIOR

TV room with vintage Knoll sofas renewed with Jim Thompson fabric e footstools with Hermès upholstery



Bedroom hall displaying American walnut panelling on walls. To the left a Filipe Garcia painting, opposing, to the far end right, two Platner armchairs with orange wool upholstery and a 1950's italian dresser



Master bedroom using graphic elements such as the table lamps, bedside tables and a Ricardo Pistola drawing, to balance textures: quilt complex fabric, delicate silk wallpaper, draped leather bed base